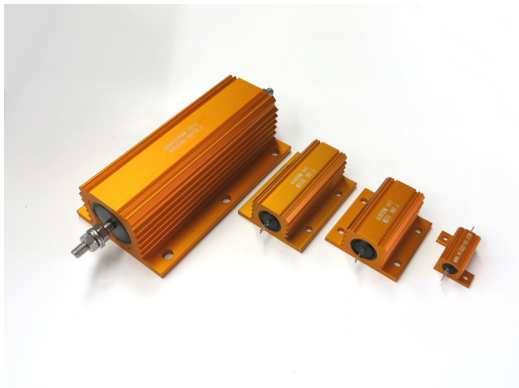


METAL CLAD WIRE WOUND RESISTORS

WD5, WD10, WD25, WD50,
WD75, WD100, WD150,
WD200, WD250, WD300



Features and Applications

Power rating 75W to 300W, rush current protection.

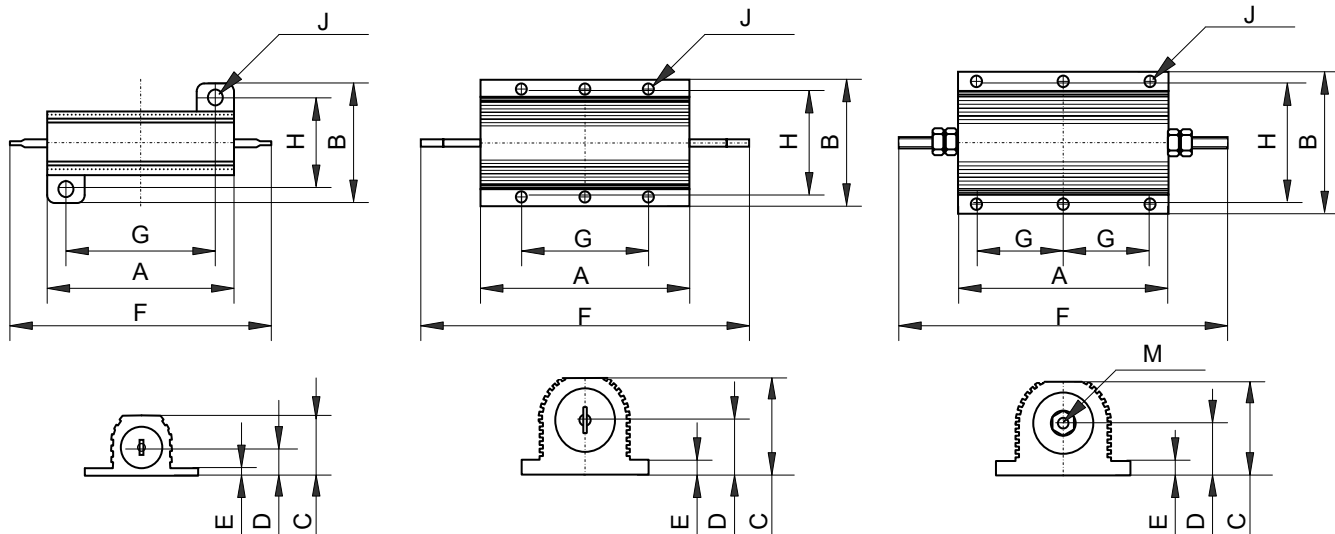
High temperature operation, -25°C to 250 °C and all welded construction. Low TCR 30ppm/K, Tolerance 5% in standard and available up to 0.25%.

Non-inductive winding is available, please call us

MIL-R-39009 and MIL-R-18546 style.

Applications include inverters for power electronics

Dimensions (mm)



WD5, WD10, WD25, WD50

WD75, WD100, WD150

WD200, WD250, WD300

(mm)	A	B	C	D	E	F	G	H	J	M
	±0.5	--	Max	Max	--	Max	±0.3	±0.3	±0.5	--
WD5	16.8	17.0	9.0	4.5	2.5	31.0	11.3	12.4	2.4	--
WD10	20.1	21.0	11.0	5.5	2.5	36.5	14.3	15.9	2.4	--
WD25	27.3	28.0	15.0	7.5	3.0	51.8	18.3	19.8	3.2	--
WD50	50.1	30.0	17.0	8.5	3.0	72.5	39.7	21.4	3.2	--
WD75	48.9	48.0	26.0	12.0	4.0	71.0	29.0	37.0	4.4	--
WD100	65.4	48.0	26.0	12.0	4.0	87.5	35.0	37.0	4.4	--
WD150	97.0	48.0	26.0	12.0	4.0	122.0	29.0	37.0	4.4	--
WD200	89.0	73.0	45.0	20.5	5.5	143.0	35.0	57.2	5.1	M6
WD250	114.0	73.0	45.0	20.5	5.5	163.0	44.5	57.2	5.1	M6
WD300	127.0	73.0	45.0	20.5	5.5	180.0	52.0	59.0	6.6	M6

METAL CLAD WIRE WOUND RESISTORS

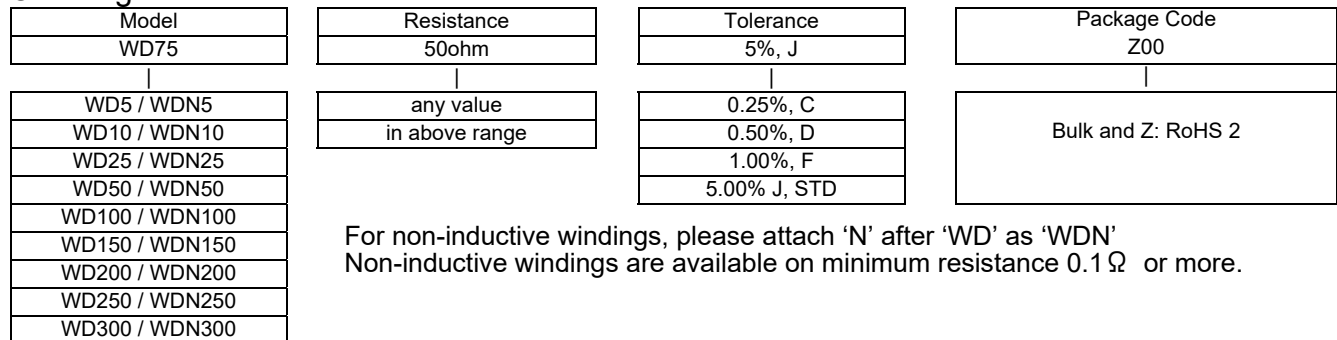
WD5, WD10, WD25, WD50, WD75, WD100, WD150, WD200, WD250, WD300

Power Rating and Resistances

Type	Power Rating(W @ 25°C)		Resistances	Operating Voltages	Insulation Voltages	Weight	Heat Sink Plate
	With heat sink	Without heat sink	Resistance Range Ω	DC / AC rms Volt	(AC peak Volt)	Weight approx. (grams)	cm ² - thickness mm
WD5	10	5	0.1 - 10k	160	1400	5	400 - 1
WD10	15	8	0.1 - 15k	260	1400	7	400 - 1
WD25	25	12.5	0.01 - 36k	550	2500	15	550 - 1
WD50	50	20	0.01 - 86k	1250	2500	30	550 - 1
WD75	75	45	0.1 - 50K	1400	5000	85	1000 - 3
WD100	100	50	0.1 - 100K	1900	5000	115	1000 - 3
WD150	150	55	0.1 - 100K	2500	5000	175	1000 - 3
WD200	200	50	0.1 - 50K	1900	5000	475	3750 - 3
WD250	250	60	0.1 - 65K	2200	5000	600	4800 - 3
WD300	300	75	0.1 - 80K	2500	5000	700	5800 - 3

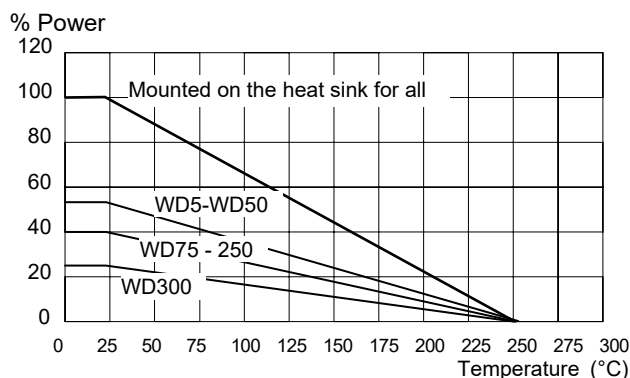
* When you look for a resistance value lower than 0.1Ω, please consider the metal clad wire wound resistor, UAL series.

Ordering Information

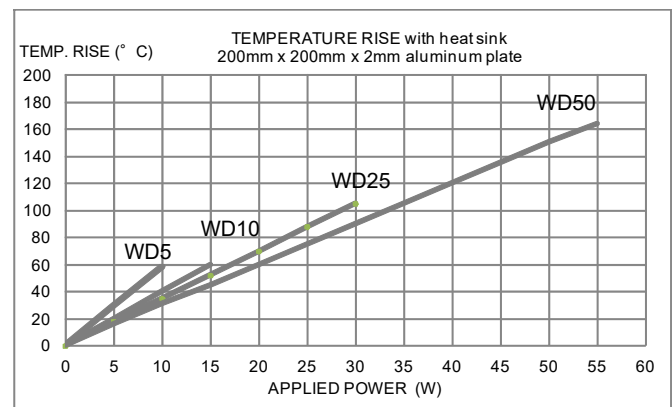


For non-inductive windings, please attach 'N' after 'WD' as 'WDN'
Non-inductive windings are available on minimum resistance 0.1 Ω or more.

Derating



Temperature Rise



Specifications and Performances

Tolerance	(for values less than 1Ω) (for values greater than 1Ω)	+/-5% in standard +/-0.25% to +/-5% available
TCR	Dry / Normal	100 ppm/°C
Insulation Resistance	Dry / Normal	10 GΩ min.
Load Life	90min ON, 30min OFF 1000 H	ΔR < 1%+0R05
Short time Overload	5 x rated voltage for 5 seconds	ΔR < 1% +0R05
Terminal Strength	20N Pull	ΔR < 0.25% +0R05
Resistance of soldering Heat	260 °C 10 seconds	ΔR < 0.25% +0R05
Thermal Shock	-55 °C - +200 °C, 5 cycles	ΔR < 0.25% +0R05
Vibration	10Hz to 500Hz, 10g, 6 hours	ΔR < 0.25% +0R05