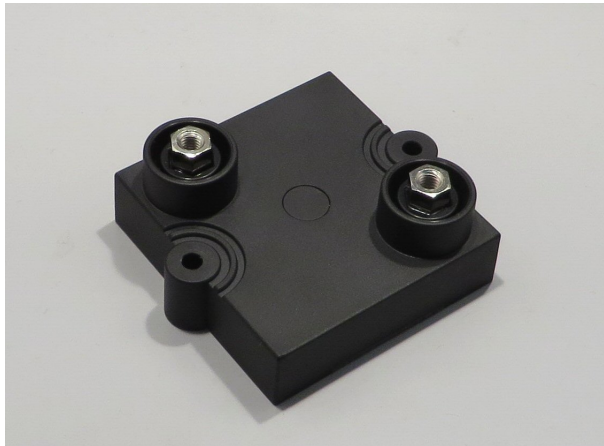


2000W - 8kV INSULATION
 WATER COOLING,
 CHASSIS MOUNTING,
 NON-INDUCTIVE,
 HIGH VOLTAGE,
 HIGH POWER RESISTORS

RPU2000



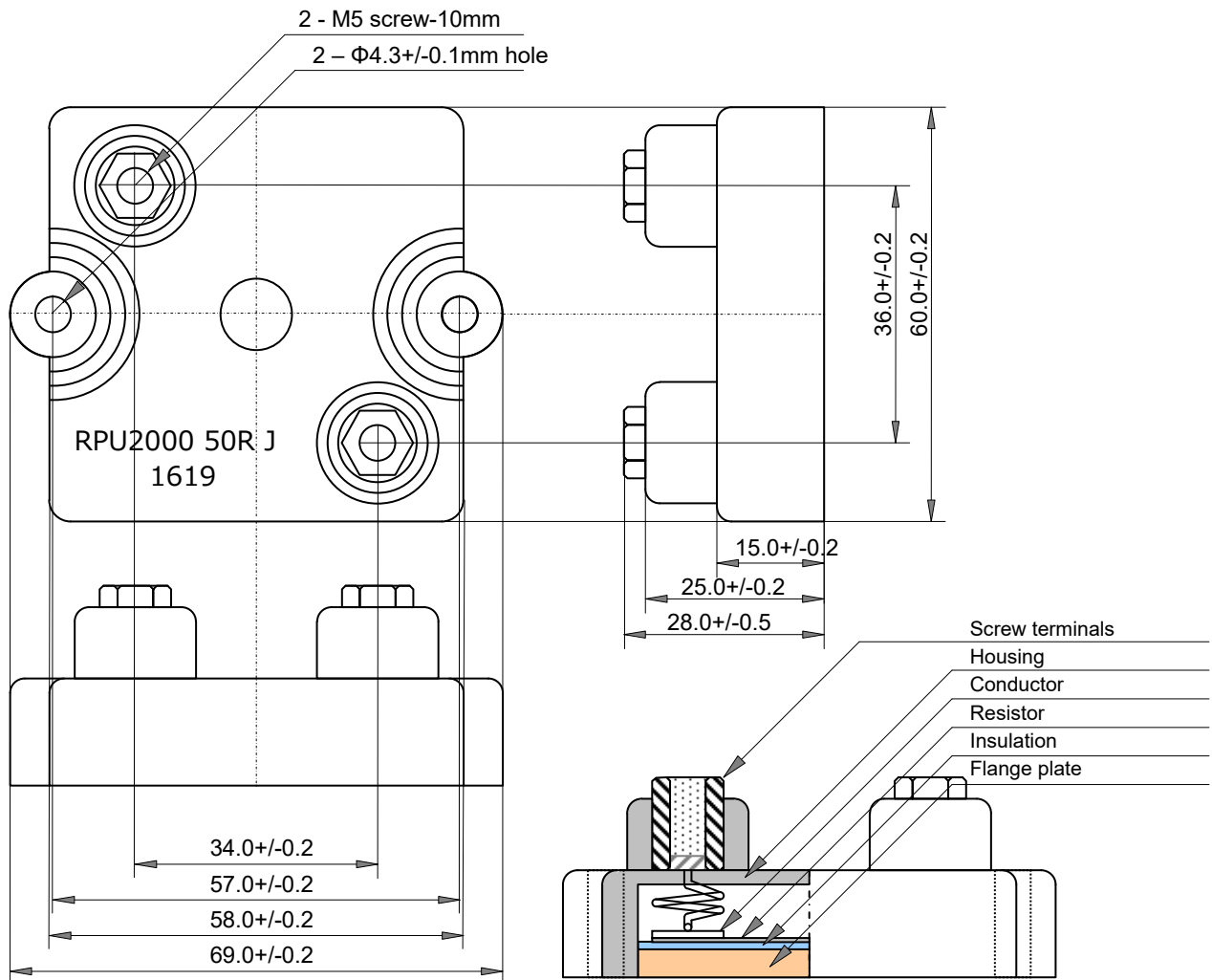
Features and Applications

Low profile flat type, 2000W high power resistor. Attaching large air-cooled heat sink or water-cooling operation.

8kV insulation voltage and starting voltage of 5kV - 50kHz for partial discharge typical.

Higher density packing, vibration-proof, insulation withstand voltage and perfect heat dissipation possible. Applications include harmonic filter resistors, snubber resistors, surge protection, breeder resistor, dummy load, dumping resistor for heavy duty power electronics, power supplies, pulse generators, high frequency amplifiers, theater audio equipment, etc.

Dimensions and Structure (mm)



2000W RPU2000 CHASSIS MOUNTING NON-INDUCTIVE HIGH POWER RESISTORS

Ordering Information

Type	TCR	Resistance	Tolerance	Code	Note
RPU2000	---	101	J	Z00	
RPU2000	---	101	J (5%)	Z00	RoHS, Box Package
		E24+ (*)			

(*) Standard resistance value, E24+

1.0	1.1	1.2	1.3	1.5	1.6	1.8	2.0	2.2	2.4	2.5	2.7	3.0	3.3
3.6	3.9	4.0	4.3	4.7	5.0	5.1	5.6	6.2	6.8	7.5	8.0	8.2	9.1

Specifications and Performances

Items	Performances	Conditions
Rated Power	2000 Watts	At flange temperature -55 to +65°C
Short-time Overload	2400 Watts	5 seconds with heat sink
Heat Resistance	0.055 °C /W	From resistor to flange
Resistance Range	0.5 Ω to 1 MΩ	
Nominal Resistance	E24+	Additionally, 2.0 and 5.0.
TCR	+/-100 ppm/K (A)	At 1.0ohm-1Mohm, +/-200ppm/°C at <1.0ohm, for -55 to +155 °C
Tolerance	+/- 5% (J)	
Operation Temp.	-55 to +175 °C	At resistor element surface
Max. Applied Voltage	5000V or $E = \sqrt{P \cdot R}$	P shows rated power (W), R resistance value (ohm), E voltage (V)
Insulation Voltage	8,000 V – 50 Hz	60 seconds between terminals and flange. Leak current below 0.5mA
Capacitance	73 pF	Resistor terminal - flange
Inductance	108 nH	Resistor terminal - Terminal
Capacitance	25 pF	Resistor terminal - Terminal
Creeping distance	42 mm	
Air distance	14 mm	
Insulation Resistance	Over 1 G ohm	Between terminals and flange., DC 1000V
Vibration	ΔR +/-0.25 %	
Flammability	UL94V-0	For resistor body
Storage Temperature	-55 °C - 70 °C	
Torque, mounting screw	1.8 Nm	
Torque, Terminals	2.0Nm	
Weight	160 grams	

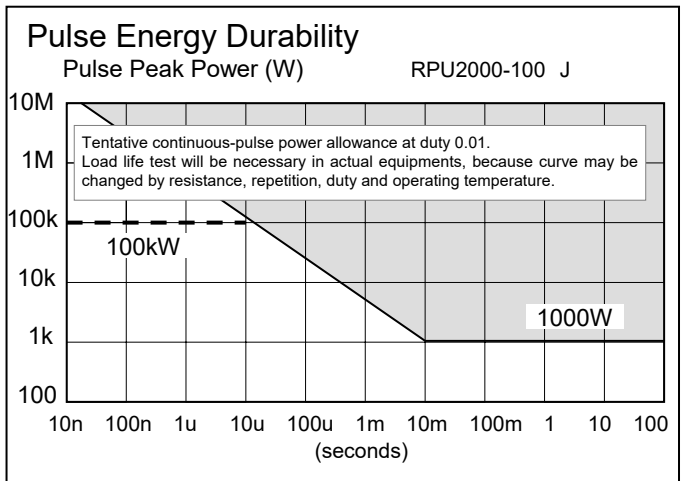
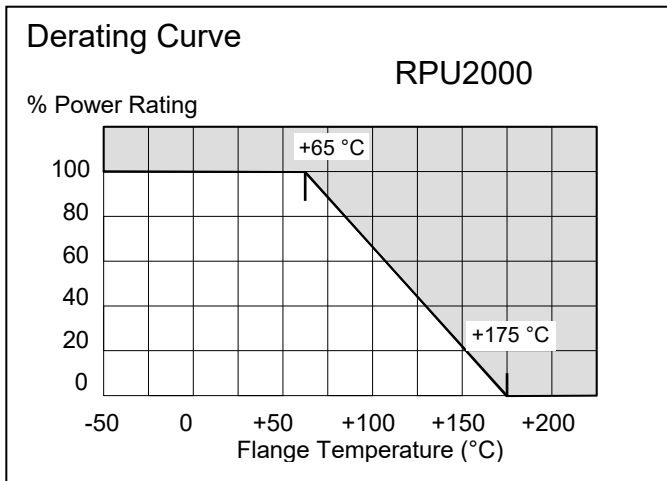
2000W

RPU2000

CHASSIS MOUNTING NON-INDUCTIVE HIGH POWER RESISTORS

Reliability

Temperature Cycle	+/- (0.20% + 0.01Ω)	JIS C 60068-2-14
Load Life	+/- (0.40% + 0.01Ω)	1000 hours
High Temp / Humidity Storage	+/- (0.25% + 0.01Ω)	JIS C 60068-2-78
High Temperature Storage	+/- (0.40% + 0.01Ω)	JIS C 60068-2-2
Low Temp Storage	+/- (0.40% + 0.01Ω)	JIS C 60068-2-1
High Temp Load	+/- (0.40% + 0.01Ω)	70°C, DC0.1W, 1000 h, 90min ON / 30 off
High Temp / High Humidity Load	+/- (0.25% + 0.01Ω)	40°C, 95%RH, DC0.1W, 1000 h, 90min ON / 30 off
Short Time Overload	+/- (0.25% + 0.01Ω)	1.1 x Rated Power, 5 seconds
Vibration	+/- (0.25% + 0.01Ω)	IEC60068-2-6, displacement 0.75mm or acceleration 100m/sec ² , 10Hz-54Hz sweep, 10 cycles X-Y-Z direction.



Note: