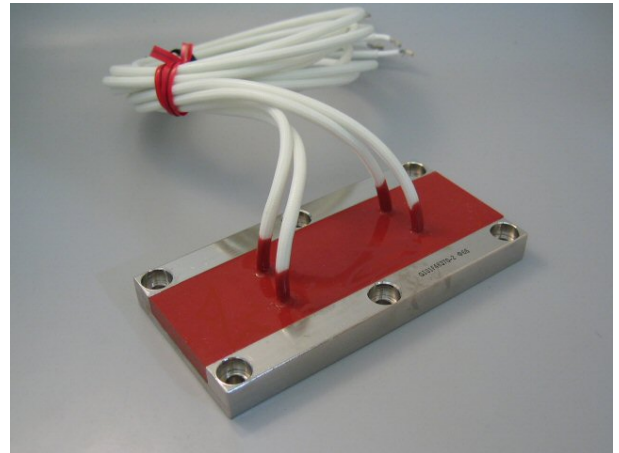


# POWER -NIKKOHM

## SCREW MOUNT NON-INDUCTIVE HIGH POWER RESISTORS

### RPF-100, RPF-250



#### Features and Applications

Chassis mounting high power resistor of 100W to 250W rating power.

Small in regard to thickness and with vertical terminal wires so suitable for high density electronic design.

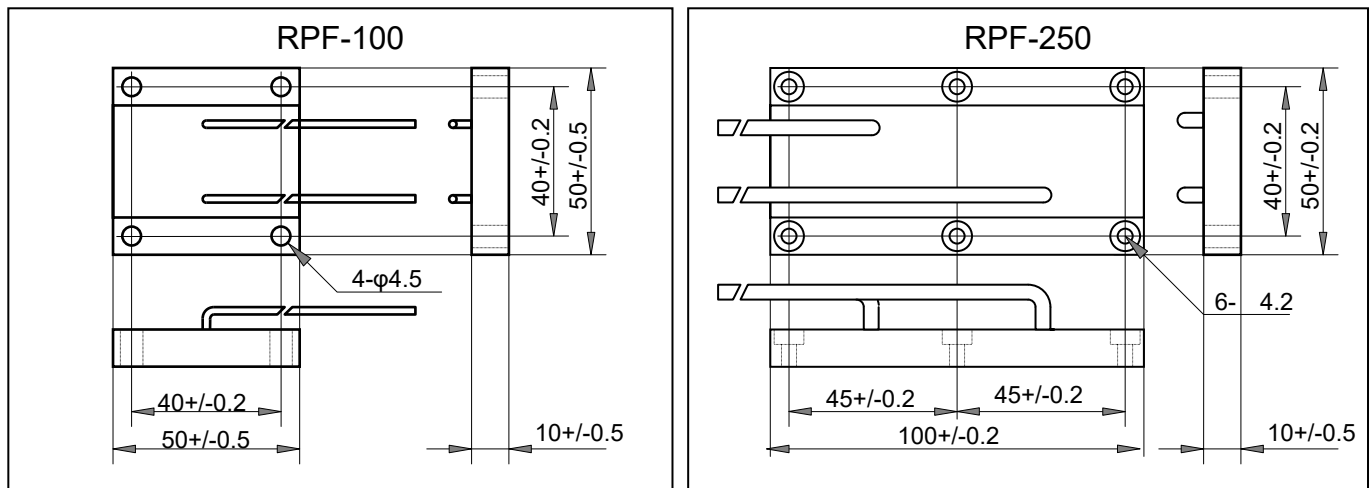
Also, a decrease in the inductive effect in power electronics circuits will be realized.

Complete thermal conduction and heat dissipation design will be available.

Gate resistor and snubber resistor in power supply.

Load resistor and dumping resistor in high end audio.

Precision terminal resistor in RF amplifiers.



#### Specifications and Performances

	RPF-100	RPF-250	Test Conditions
Rated Power	100W	250W	
Resistance Range	10Ω - 1KΩ	1Ω - 1KΩ	
Resistance	E24	E24	Additionally, 2.0 and 5.0.
TCR	±250 ppm/°C	±250 ppm/°C	For -55 to +155 °C
Tolerance	±10%	±10%	
Operation Temp.	-55 - +120 °C	-55 - +120 °C	
Applied Voltage	$E = \sqrt{P \cdot R}$	$E = \sqrt{P \cdot R}$	
Insulation Voltage	5KVAC	5KVAC	60 seconds, 1mA
Load Life	±(1.0 %)	±(1.0 %)	25°C, 90 min. ON, 30min.OFF, 1000hours.
Humidity	±(1.0 %)	±(1.0 %)	40°C, 90~95%RH, DC0.1W, 1000hours.
Temperature Cycles	±(1.0 %)	±(1.0 %)	-55°C, 30 min.,+155°C30min., 20cycles. (-55°C, 30 min.,+120°C30min., 20cycles. at RPF-100)
Short time OVL	±(0.25 %)	±(0.25 %)	Rating watt×2.5, 2.5seconds, with heat sink.
Insulation Resistance	> 1000 MΩ	> 1000 MΩ	Between terminals and tab.
Vibration	±(0.25 %)	±(0.25 %)	
Weight			

## SCREW MOUNT NON-INDUCTIVE HIGH POWER RESISTORS

RPF100 RPF250

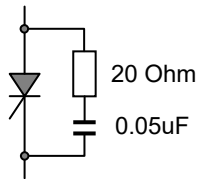
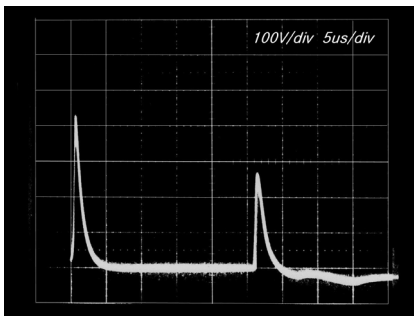
### Ordering Information

Type	Spec. No.	TCR	Resistance	Tolerance	RoHS & Pack
RPF-250	-01	H	10R	K	000
----	----	----	10R+10R	----	----
RPF-100	-02	H (250ppm)	R or R + R	K(10%)	000
RPF-250	-11				
(RPF-320)					

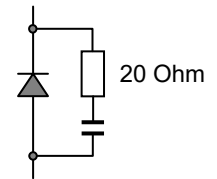
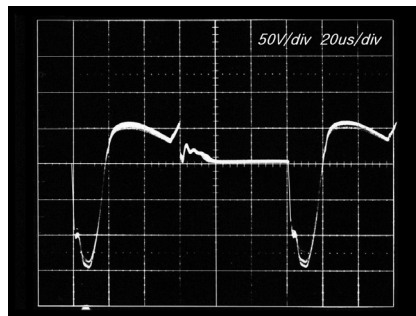
Not RoHS

Data of the RPF-320 is out of this datasheet, please call factory  
 Specification number “-00” will specify in the supplier’s specification.  
 RPF250 has two resistor elements with same resistance value and can be show with a plus sign in resistance value column.  
 RPF cannot RoHS certification and contains 60%Pb-40%Sn solder.  
 RPF320 is slightly larger than RPF250, please call factory.

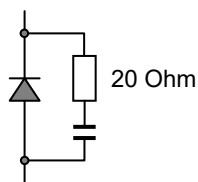
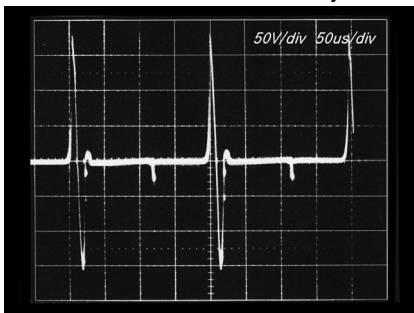
Recommended Long Life Actual Applications of RPF250 snubber, a series connection of two elements.



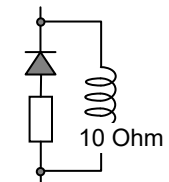
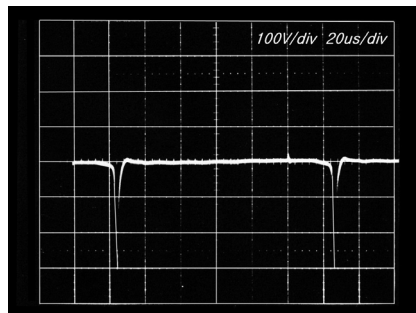
CR snubber for thyristor converter



CRD snubber



CRD snubber



LRD snubber

