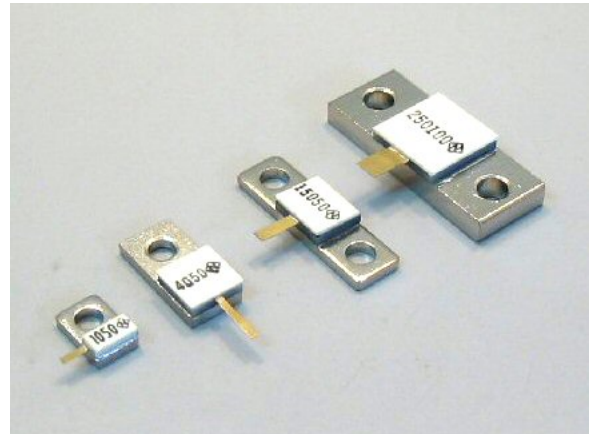


10W, 50W, 80W, 100W, 150W, 200W, 250W
FLANGED POWER TERMINATIONS, RFT



Features:

- High power flanged termination for all DC up to 4GHz applications.
- Small size and wide frequency range specifications realized with through large heat conducting AlN substrate.
- Sufficient mechanical strength metallization from spattered thin film technology.
- 50ohm resistance with tolerance 1%, and terminations include chips and many style flange provided as standard, and other resistance and power available.
- Long life and temperature stability are shown by a result of Ni-Cr thin film technology.

Applications: Termination for isolator/circulators, Fixed station of mobile communication electronics, High power microwave amplifiers

Ordering Information

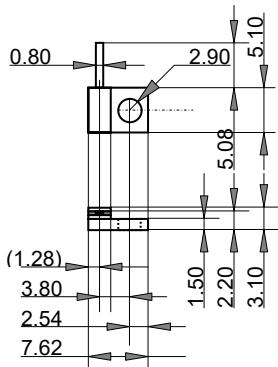
5.0 mm beam lead length

Type	Style	TCR	Resistance	Tolerance	RoHS/Package
RFT050	120	C	500	F	Z00
RFT010	100	C	50 Ohm	F	Z00
RFT050	110	(50ppm)		(1.0%)	
RFT080	120				
RFT100	130				
RFT150	140				
RFT200					
RFT250					

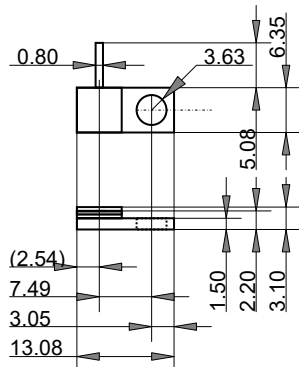
10mm beam lead length

Type	Style	TCR	Resistance	Tolerance	RoHS/Package
RFT050	121	C	500	F	Z05
RFT010	101	C	50 Ohm	F	Z05(tray)
RFT050	111	(50ppm)		(1.0%)	
RFT080	121				
RFT100	131				
RFT150	141				
RFT200					
RFT250					

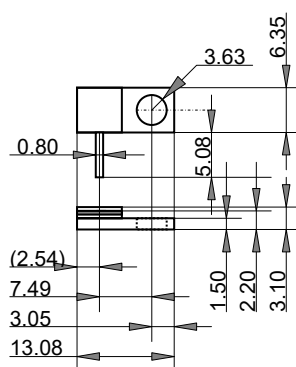
10W, 50W, 80W, 100W, 150W, 200W, 250W, TERMINATIONS, Type RFT
Style and Dimensions (mm)



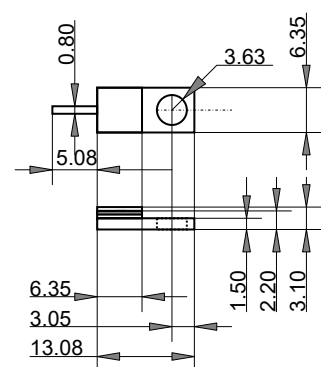
RFT010 120



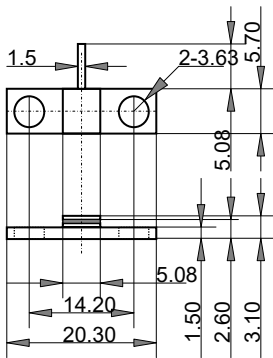
RFT050 120
RFT080 120



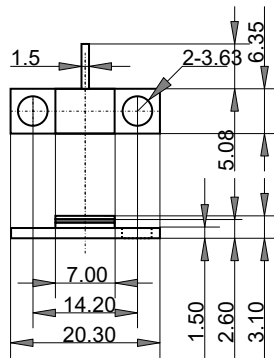
RFT050 130
RFT080 130



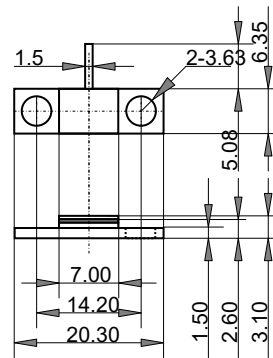
RFT050 140
RFT080 140



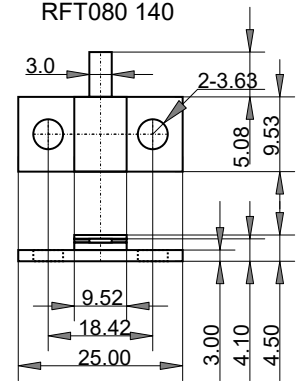
RFT050 110



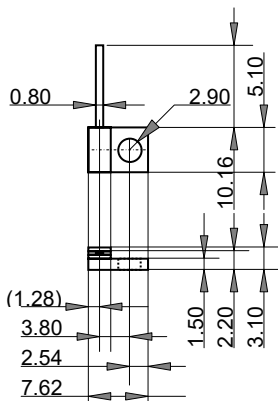
RFT100 110



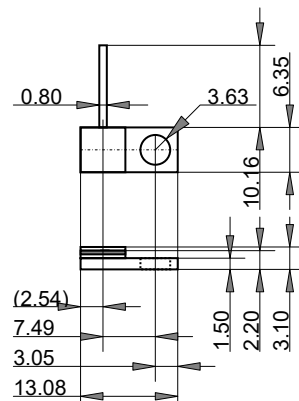
RFT150 110



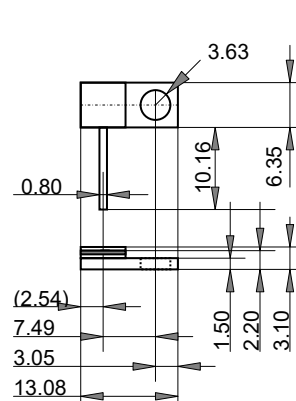
RFT250 110



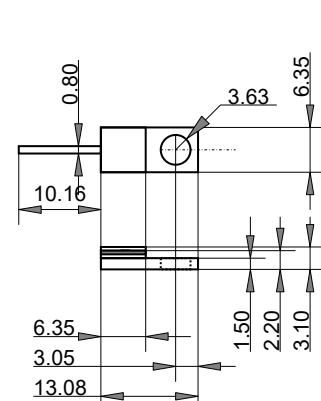
RFT010 121



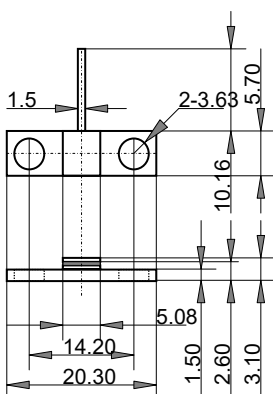
RFT050 121
RFT080 121



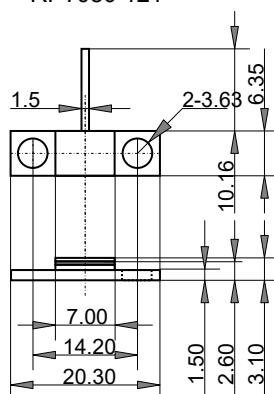
RFT050 131
RFT080 131



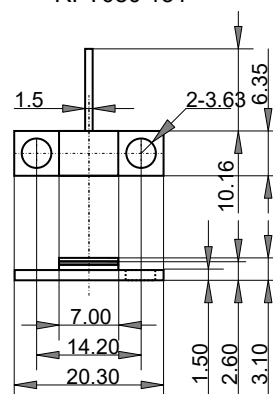
RFT050 141
RFT080 141



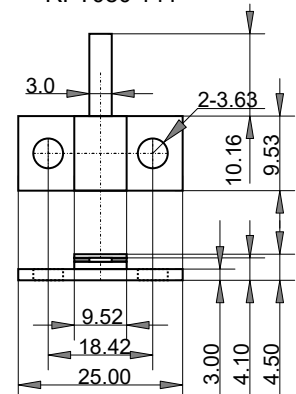
RFT050 111



RFT100 111



RFT150 111



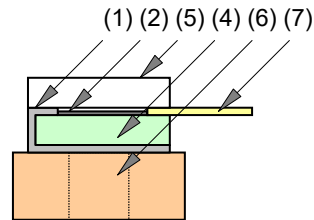
RFT250 111

10W, 50W, 80W, 100W, 150W, 200W, 250W, TERMINATIONS, Type RFT

Performance Specifications

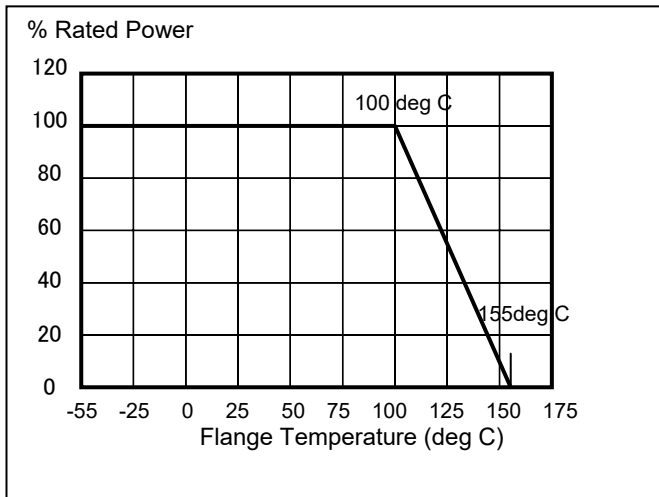
Type	Rated Power (W)	Heat Resistance (°C/W)	VSWR 500MHz	VSWR 1GHz
RFT010	10	5.0	---	<1.15
RFT050	50	1.0	---	<1.15
RFT080	80	0.70	---	<1.20
RFT100	100	0.50	---	<1.20
RFT150	150	0.50	---	<1.30
RFT200	200	0.25	---	<1.30
RFT250	250	0.20	---	<1.30

Materials

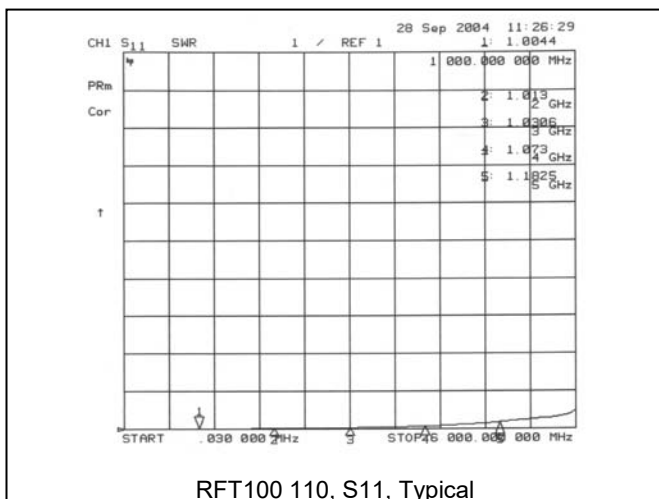


	Substance	Material
(1)	Cold end Terminal	Tin plated Ni-Cu
(2)	Resistive	Ni-Cr
(3)	Substrate	ALN
(4)	Hot end Terminal	Tin plated Ni-Cu
(5)	Cover	ALO
(6)	Flange	Ni plated Cu
(7)	Beam Lead	Au plated Cu

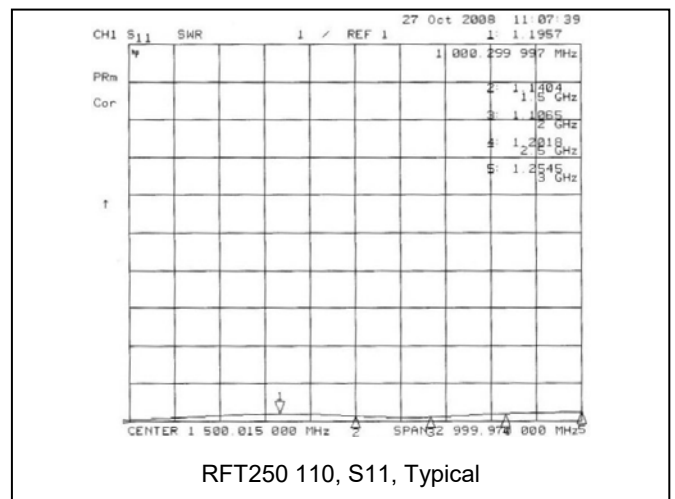
Derating



Return Loss, VSW



Return Loss, VSW



Note: RoHS 2011/65/EU conformity.
Country origin, Japan