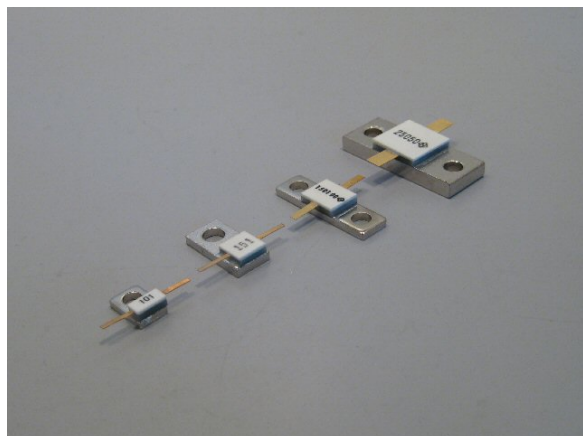


10W, 50W, 80W, 100W, 150W, 200W, 250W
FLANGED POWER RESISTORS, RFR



Features:

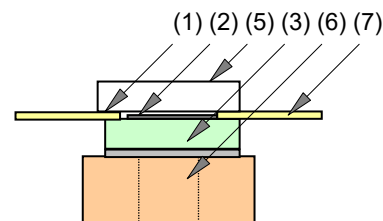
- High power flanged resistors for all DC up to 4GHz applications.
- Small size and wide frequency range specifications realized with through large heat conducting AlN substrate.
- Sufficient mechanical strength metallization from spattered thin film technology.
- 50ohm resistance with tolerance 1%, and terminations include chips and many style flange provided as standard, and other resistance and power available.
- Long life and temperature stability are shown by a result of Ni-Cr thin film technology.
- Applications include power absorption resistor, termination for isolator/circulators, base station of mobile communication electronics, High power microwave amplifiers.

Ordering Information

| | | | | | |
|--------|-------|---------|------------|-----------|--------------|
| Type | Style | TCR | Resistance | Tolerance | RoHS/Package |
| RFR050 | 120 | C | 201 | F | Z05 |
| RFR010 | 110 | C | 50 Ohm | F | Z05 (tray) |
| RFR050 | 120 | (50ppm) | 100 Ohm | (1.0%) | |
| RFR080 | | | 150 Ohm | | |
| RFR100 | | | 200 Ohm | | |
| RFR150 | | | 250 Ohm | | |
| RFR200 | | | 300 Ohm | | |
| RFR250 | | | 400 Ohm | | |
| | | | 600 Ohm | | |
| | | | 800 Ohm | | |

Performance Specifications

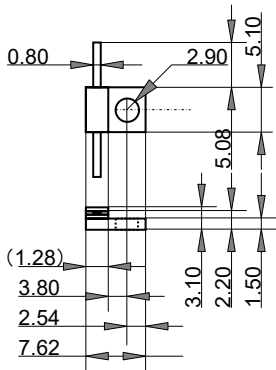
| Type | Rated Power (W) | Heat Resistance (deg C/W) | Cp (pF) R=100R | VSWR 1GHz |
|--------|-----------------|---------------------------|----------------|-----------|
| RFR010 | 10 | 5.0 | <2.00 | 1.15 |
| RFR050 | 50 | 1.0 | <2.12 | 1.15 |
| RFR080 | 80 | 0.7 | <2.43 | 1.20 |
| RFR100 | 100 | 0.5 | <2.43 | 1.20 |
| RFR150 | 150 | 0.5 | <2.43 | 1.30 |
| RFR200 | 200 | 0.25 | <5.81 | 1.30 |
| RFR250 | 250 | 0.2 | <5.83 | 1.30 |



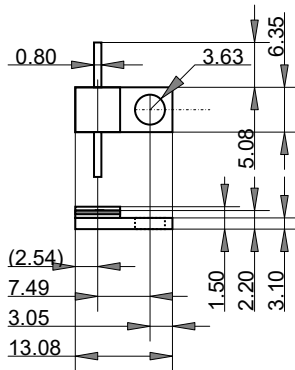
| | Substance | Material |
|-----|-------------------|------------------|
| (1) | Cold end Terminal | Tin plated Ni-Cu |
| (2) | Resistive | Ni-Cr |
| (3) | Substrate | ALN |
| (4) | Hot end Terminal | Tin plated Ni-Cu |
| (5) | Cover | ALO |
| (6) | Flange | Ni plated Cu |
| (7) | Beam Lead | Au plated Cu |

10W, 50W, 80W, 100W, 150W, 200W, 250W RESISTORS

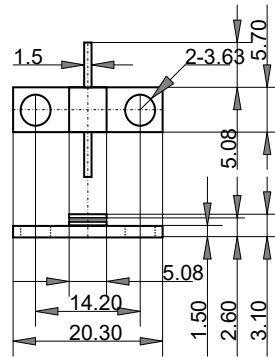
Style and Dimension (mm)



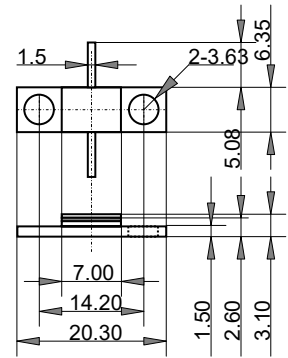
RFR010 120



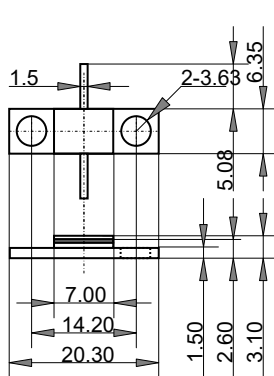
RFR050 120 RFR080 120



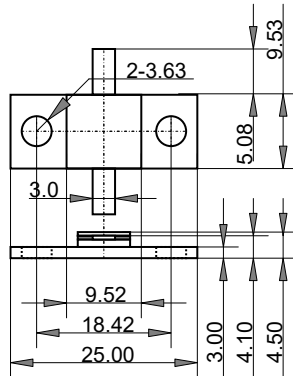
RFR050 110



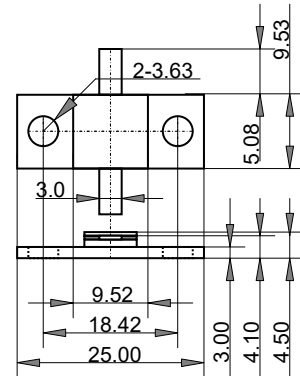
RFR100 110



RFR150 110



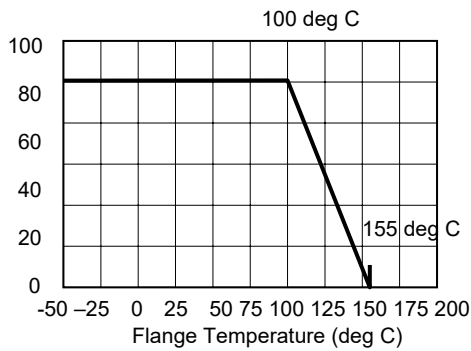
RFR200 110



RFR250 110

Derating Curve

% Rating Power



Installation

